

# UNIT EV7

APPROX. 777 SQ FT (72.2 SQ M)  
RETAIL SPACE

## LETTING AGENTS



+44 (0)20 7935 5000

**MATT HYLAND**

matthew.hyland@cushwake.com



+44 (0)20 7290 4555

**DAVID BANNISTER**

dbannister@nashbond.co.uk

## King's Cross

+44 (0)20 3664 0200

**CRAIG WHITE**

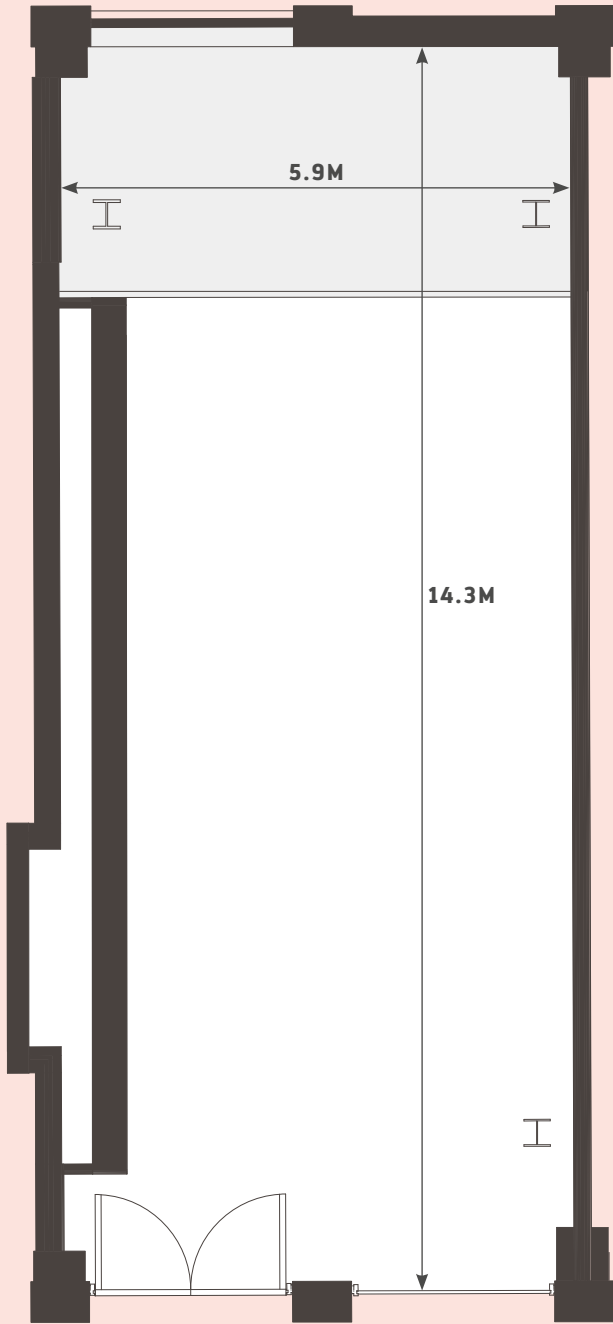
craig.white@argentllp.co.uk

**CLAIRE LEVITT**

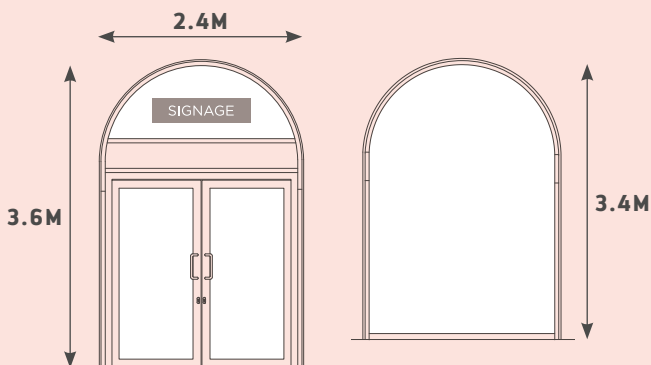
claire.levitt@argentllp.co.uk

RETAIL LAYOUT

NOT TO SCALE: PLANS ARE FOR INDICATIVE PURPOSES ONLY

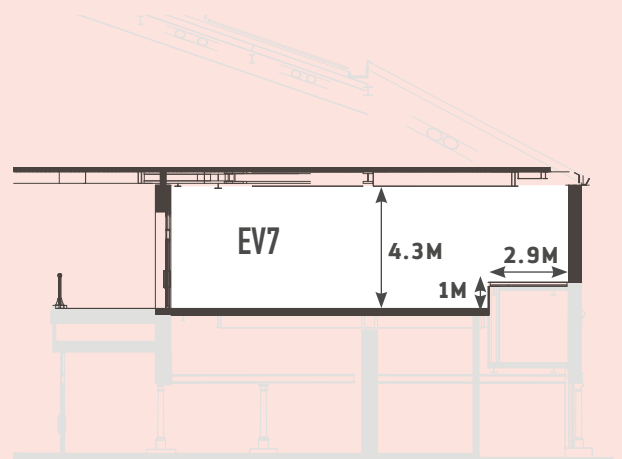


FLOOR PLAN



SHOP FRONT AND SIGNAGE ZONES

<b>UNIT NUMBER</b>	EV7
<b>LEVEL</b>	Viaduct Level
<b>PERMITTED USE</b>	A1
<b>APPROX. AREA (NIA)</b>	777 sq ft / 72.2 sq m
<b>MAX. CEILING HEIGHT</b>	4.3m
<b>FLOOR FINISH</b>	Concrete slab with 90 / 124mm tenant floor finish zone
<b>WALL FINISH</b>	Exposed brickwork / Plasterboard (taped and jointed) / Exposed concrete
<b>CEILING FINISH</b>	Exposed metal deck / Fire protection boards between existing joists
<b>SHOP FRONT</b>	Dark Grey PPC Steel shopfront with manual door function. Integrated louvres with blanking panels for tenant connection
<b>FLOOR LOADING (LIVE LOAD UDL)</b>	4.0 kN/m <sup>2</sup> (potential storage area 7.5kN/m <sup>2</sup> )
<b>WATER SUPPLY</b>	28mm capped supplies (0.5 l/s)
<b>GAS SUPPLY</b>	n/a
<b>ELECTRICITY SUPPLY</b>	12 KVA Three Phase Supply. 1No. 100A TP&N switch isolator
<b>HEATING/HOT WATER</b>	12.7kW LTHW Load. Dedicated plate heat exchanger installed by landlord with valved and capped connections
<b>COOLING</b>	10.78kW CHW Load. Dedicated plate heat exchanger installed by landlord with valved and capped connections
<b>DRAIN CONNECTIONS</b>	3 no. 100mm
<b>INTERNAL NOISE LIMITS</b>	NR 40
<b>NOTE</b>	Raised platform at rear of the unit. Timber / brick infills to the rear of the unit



SECTION