

UNIT WV5

APPROX. 845 SQ FT (78.5 SQ M)
RETAIL SPACE

LETTING AGENTS



+44 (0)20 7935 5000

MATT HYLAND

matthew.hyland@cushwake.com



+44 (0)20 7290 4555

DAVID BANNISTER

dbannister@nashbond.co.uk

King's Cross

+44 (0)20 3664 0200

CRAIG WHITE

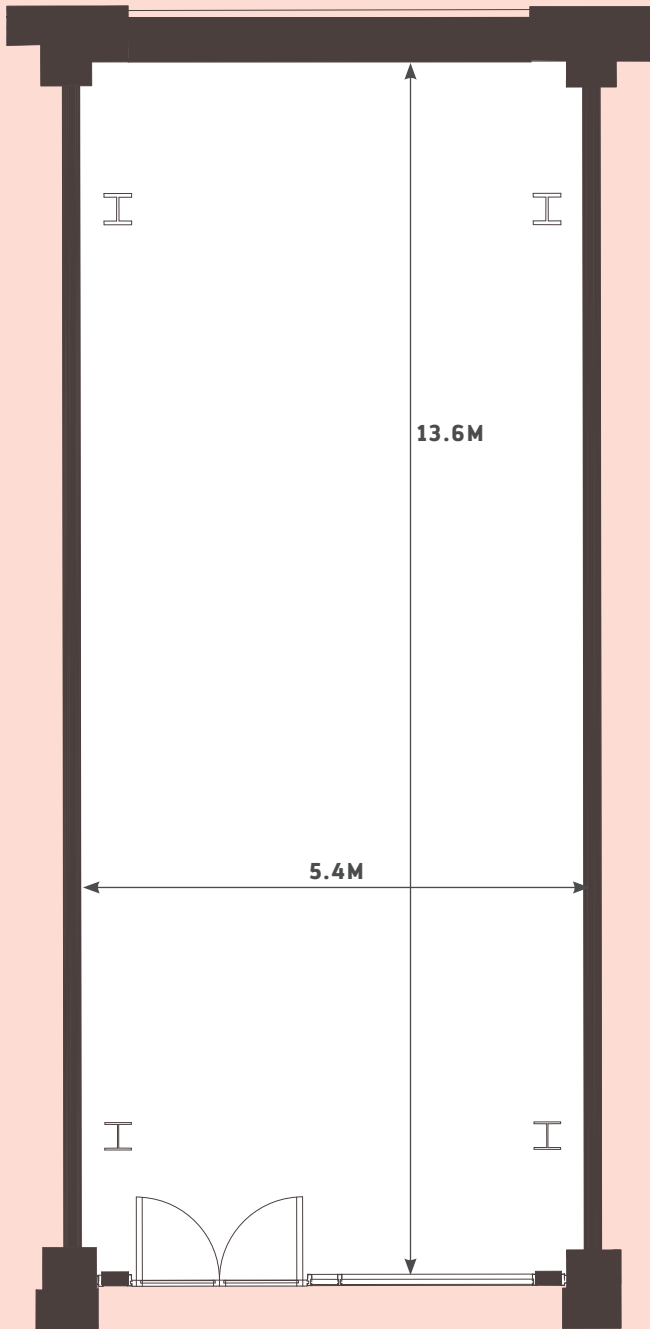
craig.white@argentllp.co.uk

CLAIRE LEVITT

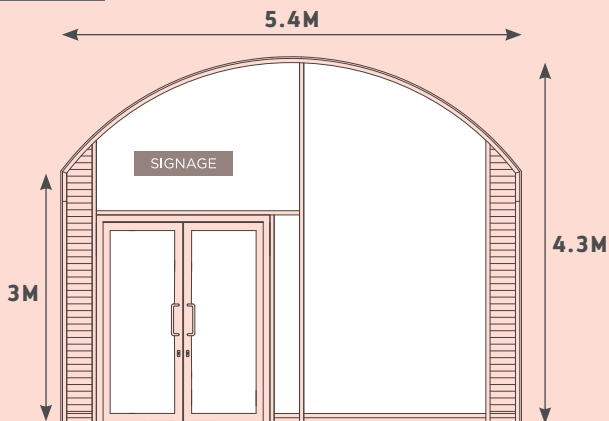
claire.levitt@argentllp.co.uk

RETAIL LAYOUT

NOT TO SCALE: PLANS ARE FOR INDICATIVE PURPOSES ONLY

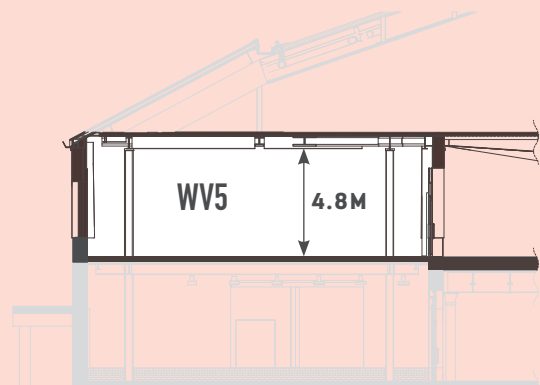


FLOOR PLAN



SHOP FRONT AND SIGNAGE ZONES

| | |
|--------------------------------------|--|
| UNIT NUMBER | WV5 |
| LEVEL | Viaduct Level |
| PERMITTED USE | A1 |
| APPROX. AREA (NIA) | 845 sq ft / 78.5 sq m |
| MAX. CEILING HEIGHT | 4.8m |
| FLOOR FINISH | Concrete slab with 90mm tenant floor finish zone |
| WALL FINISH | Exposed brickwork / Plasterboard (taped and jointed) |
| CEILING FINISH | Exposed metal soffit |
| SHOP FRONT | Dark Grey PPC Steel shopfront with manual door function. Integrated louvres with blanking panels for tenant connection |
| FLOOR LOADING (LIVE LOAD UDL) | 4.0 kN/m ² (potential storage area, 7.5kN/m ²) |
| WATER SUPPLY | 28mm capped supplies (0.5 l/s) |
| GAS SUPPLY | n/a |
| ELECTRICITY SUPPLY | 13.67 KVA Three Phase Supply. 1No. 100A TP&N switch isolator |
| HEATING/HOT WATER | 13.2kW LTHW Load. Dedicated plate heat exchanger installed by landlord with valved and capped connections |
| COOLING | 11.48kW CHW Load. Dedicated plate heat exchanger installed by landlord with valved and capped connections |
| DRAIN CONNECTIONS | 2 no. 100mm |
| INTERNAL NOISE LIMITS | NR 40 |
| NOTE | Timber / brick infills to the rear of the unit |



SECTION