

# UNIT EY11

APPROX. 605 SQ FT (56 SQ M)  
RETAIL SPACE

#### LETTING AGENTS



+44 (0)20 7935 5000

**MATT HYLAND**

matthew.hyland@cushwake.com



+44 (0)20 7290 4555

**DAVID BANNISTER**

dbannister@nashbond.co.uk

## King's Cross

+44 (0)20 3664 0200

**CRAIG WHITE**

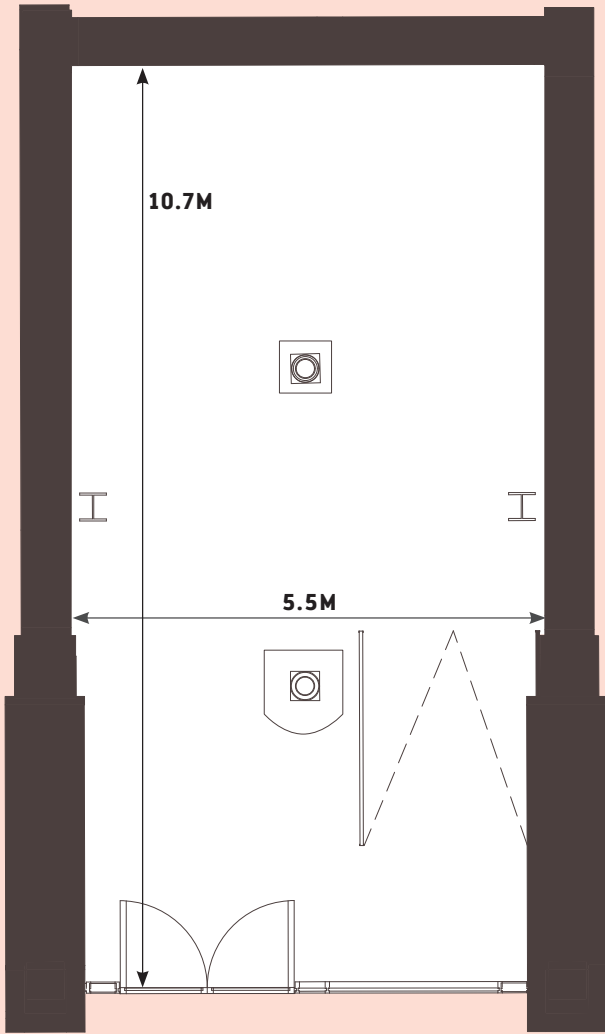
craig.white@argentllp.co.uk

**CLAIRE LEVITT**

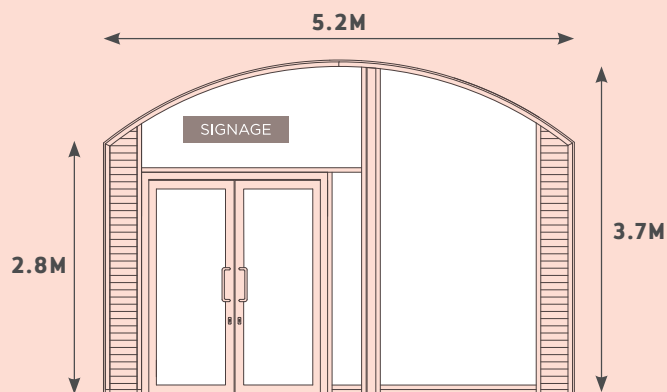
claire.levitt@argentllp.co.uk

RETAIL LAYOUT

NOT TO SCALE: PLANS ARE FOR INDICATIVE PURPOSES ONLY

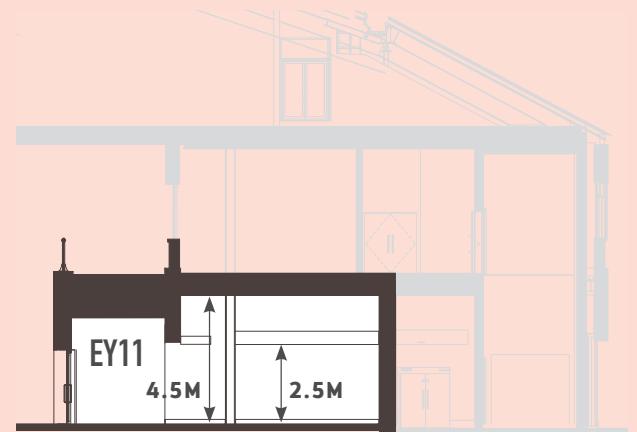


FLOOR PLAN



SHOP FRONT AND SIGNAGE ZONES

<b>UNIT NUMBER</b>	EY11
<b>LEVEL</b>	Yard Level
<b>PERMITTED USE</b>	A1
<b>APPROX. AREA (NIA)</b>	605 sq ft / 56 sq m
<b>MAX. CEILING HEIGHT</b>	2.5-4.5m
<b>FLOOR FINISH</b>	Concrete slab with 90mm tenant floor finish zone / glazed floor with exposed cobbles below
<b>WALL FINISH</b>	Exposed brickwork
<b>CEILING FINISH</b>	Exposed metal soffit
<b>SHOP FRONT</b>	Dark Grey PPC Steel shopfront with manual door function. Integrated louvres with blanking panels for tenant connection
<b>FLOOR LOADING (LIVE LOAD UDL)</b>	4.0 kN/m <sup>2</sup>
<b>WATER SUPPLY</b>	28mm capped supplies (0.5 l/s)
<b>GAS SUPPLY</b>	n/a
<b>ELECTRICITY SUPPLY</b>	10.1 KVA Three Phase Supply. 1No. 100A TP&N switch isolator (also serving unit EY10)
<b>HEATING/HOT WATER</b>	10.5kW LTHW Load. Dedicated plate heat exchanger installed by landlord with valved and capped connections (also serving unit EY10)
<b>COOLING</b>	7.7kW CHW Load. Dedicated plate heat exchanger installed by landlord with valved and capped connections (also serving unit EY10)
<b>DRAIN CONNECTIONS</b>	1no. 100mm
<b>INTERNAL NOISE LIMITS</b>	NR 40



SECTION